





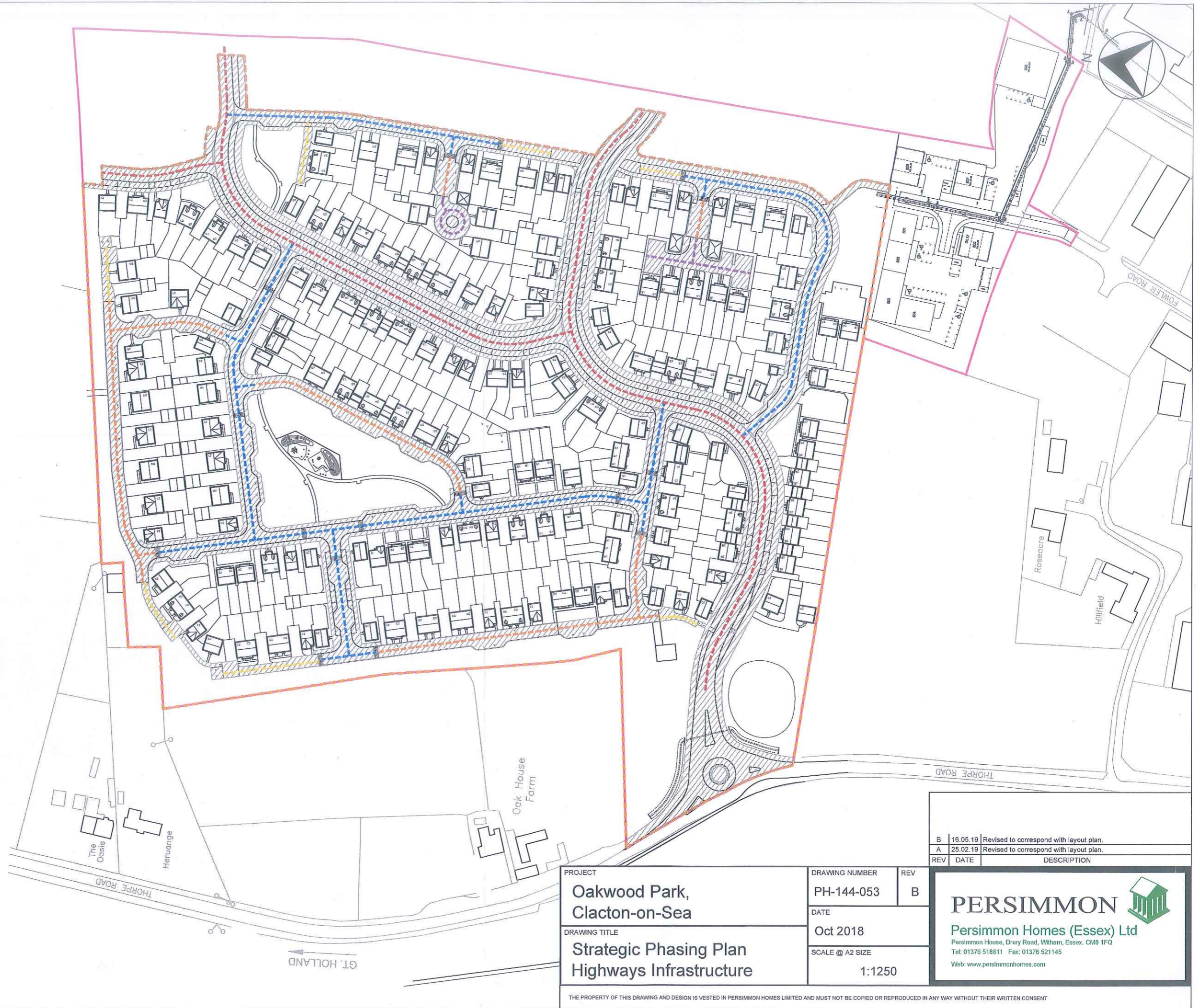


Key

-  Highways Infrastructure
-  Primary Route
-  Secondary Route
-  Tertiary Route
-  Shared Drives
-  Mews Courts



PROJECT
**Oakwood Park,
 Clacton-on-Sea**

DRAWING TITLE
**Strategic Phasing Plan
 Highways Infrastructure**

DRAWING NUMBER
PH-144-053

DATE
Oct 2018

SCALE @ A2 SIZE
1:1250

REV	DATE	DESCRIPTION
B	16.05.19	Revised to correspond with layout plan.
A	25.02.19	Revised to correspond with layout plan.

PERSIMMON 

Persimmon Homes (Essex) Ltd
 Persimmon House, Drury Road, Witham, Essex. CM8 1FQ
 Tel: 01376 518811 Fax: 01376 521145
 Web: www.persimmonhomes.com

THE PROPERTY OF THIS DRAWING AND DESIGN IS VESTED IN PERSIMMON HOMES LIMITED AND MUST NOT BE COPIED OR REPRODUCED IN ANY WAY WITHOUT THEIR WRITTEN CONSENT